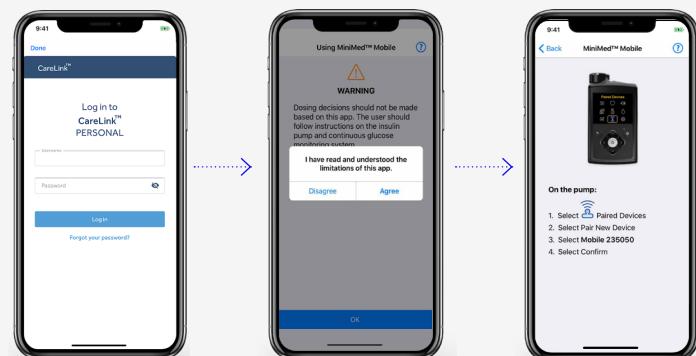


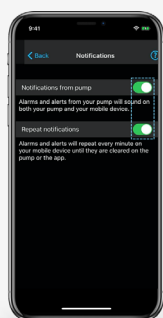
Setting up & using the MiniMed™ mobile app

- 1 Check the [Compatibility Chart](#) found on your local website FAQ.
- 2 Download the [MiniMed™ Mobile app](#) on the Apple® or Google Play™ app store.
Important - We recommend to turn off your Operating system auto updates to help ensure that you won't be using an unverified version of the app.
- 3 Follow the [On Screen prompts](#).
- 4 Create or sign into your [CareLink™ Personal Account](#).
- 5 Tap [Agree](#) to proceed through the end user agreements and consents.
- 6 Pair the App with your Pump
- 7 Read the [Dosing Disclaimer](#) that states dosing decisions should not be made based on the app then **tap agree**.
- 8 For [Automatic Syncing](#) with CareLink™ to allow automatic uploads and share with care partners, click on the **menu icon** and ensure '[sync to CareLink™](#)' is active.



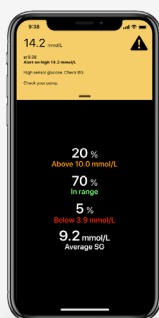
The app is now ready to use.

Home Screen View



Notifications

Notifications need to be on to receive alerts, alarms, messages and reminders. They will show as banners.



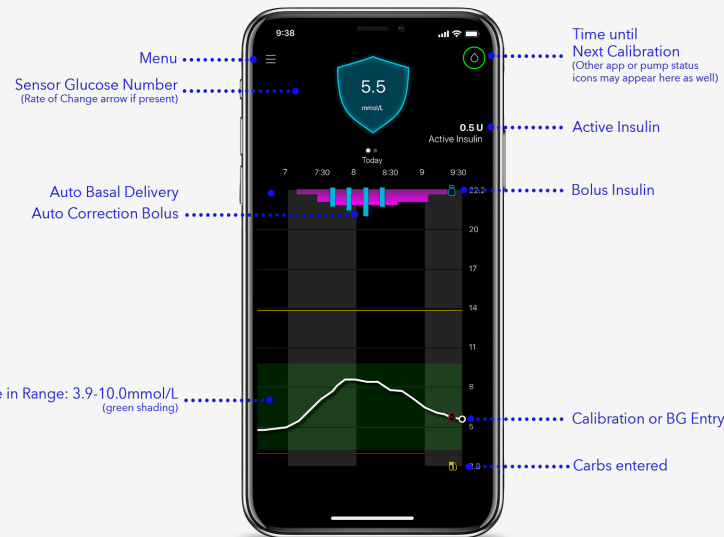
Colour Coded Notifications

RED - Alarm
ORANGE - Alert
GREY - Reminder
BLUE - Messages



Swipe Left

App users using a pump and sensor can swipe left to access time in range (TIR) data and graphs for the last 24 hours.



Personalised diabetes insights *anytime, anywhere.*