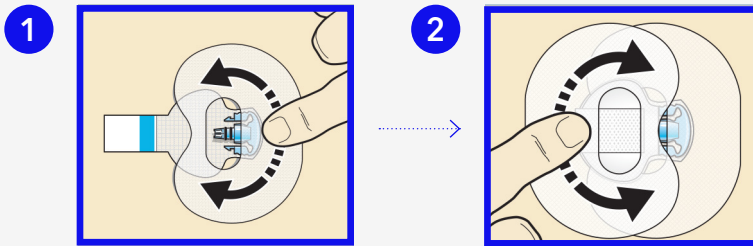


MiniMed™ 780G system

Tips & tricks



Sensor taping - Guardian Sensor 3



1 Remove the liners and apply the tape. The wide part of the tape covers half of the sensor base. Smooth the tape over the skin.

2 To apply the 2nd tape, remove the liners and rotate the 2nd tape over the transmitter. Smooth the tape.



Note:

It is very helpful to remember the order of these four steps when changing the sensor:

1. Insert the sensor
2. Apply the first oval tape
3. Connect the transmitter
4. Apply a second oval tape

Properly applying the oval tape is key to ensuring your success with the sensor. The oval tape helps to secure it from movements that can cause it to be pulled out.

Calibration

Day 1

You might want to insert a new sensor in the morning.

- **First calibration:** within 2 hours after the sensor insertion.
- **Second calibration:** within 6 hours after your first calibration.

After that you must calibrate within the next 12 hours.



Each time you perform and confirm a BG it will be considered a calibration.

You might sometimes also be prompted to do an extra calibration that will help assure sensor accuracy.

Day 2 - 7

The sensor must be calibrated at a minimum of every 12 hours throughout the life of the sensor.

We recommend that you calibrate 2-3 times a day.

Key elements

We recommend calibrating: **2-3 times a day**

Best times to calibrate:

Before meals
Before bedtime

to avoid alerts during the night



Note: If the calibration is not accepted, wait at least 15 minutes. If you receive a new calibration not accepted alert, a change sensor alert occurs.

MiniMed™ 780G system SmartGuard™ features

Bolus



Bolus 10 to 20 minutes^{1,2} before meals if possible.



Count your carbohydrates as correctly as possible.



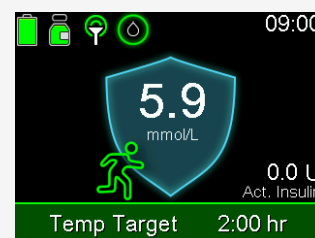
Use a correction bolus if the pump recommends one.



Do not enter fake carbohydrates in order to lower your glucose level.

Temp target

Use the Temp Target of 8.3 mmol/l) when doing sport or in other situations where you expect your SG values will drop. The Temp Target can be activated for a maximum of 24 hours.



SmartGuard™ feature screens

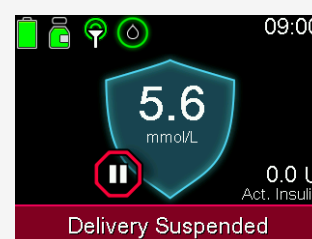
Blue shield :

SmartGuard™ function is active and works normally.



Red bar:

Insulin delivery is suspended.



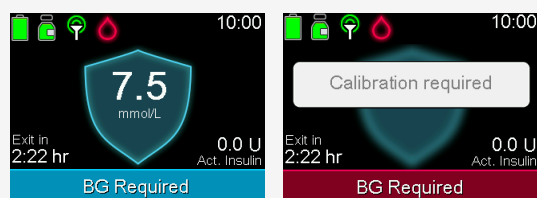
Note: If the pump is in manual mode, the shield is not shown on the home screen. The pump also works a little differently. Confirm the instructions for manual mode separately.

Read and respond

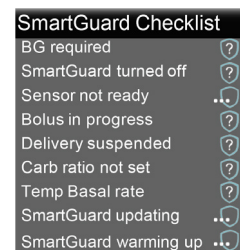
When the pump requires an action to stay in the SmartGuard™ feature, it provides a notification of any required actions and the time remaining before an exit will occur. During this time it delivers insulin based on insulin delivery history and not SG readings. You will have a maximum of 4 hours to respond before the system exits to Manual Mode.

No worries, just need to remember two easy steps:

- 1) Read the notification from the bar.
- 2) Respond to the action needed.



NOTE: Check the SmartGuard™ checklist screen. It shows the requirements needed to start or continue using the SmartGuard™ feature.



1. Slattery, D. et al. Optimal prandial timing of bolus insulin in diabetes management: a review. *Diabet Med.* 2018 35(3): 306-316.

2. Introduction to insulin pump therapy handbook. Edinburgh Centre for Endocrinology and Diabetes <http://www.edinburghdiabetes.com/paedres-hb>. Accessed July 2020.