

# MiniMed™ 780G System changing the Extended™ Infusion Set quick reference guide

## Medtronic Extended™ Infusion Set



**NOTE:**

The Extended™ Infusion Set can be used for up to seven days. The Extended Reservoir can also be used for up to seven days. Please refer to the Reservoir Instruction for Use. To avoid wasting insulin, fill the reservoir with enough insulin to last until the next infusion set change.

When you change the infusion set, change all components (the cannula housing, tubing and reservoir).



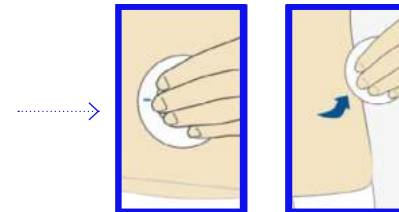
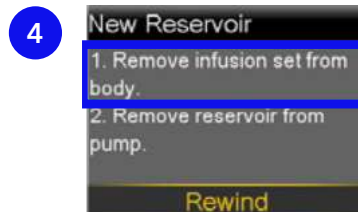
1 Wash your hands.  
Press **O**.



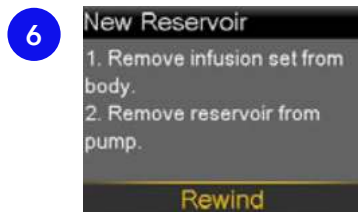
2 Select **New Reservoir**.



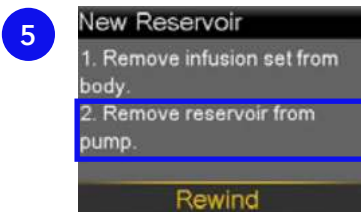
3 Select **New Reservoir**.



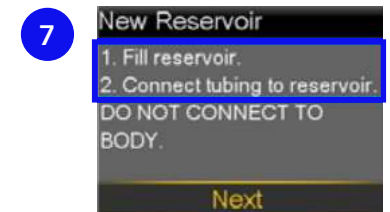
4 Remove the infusion set you have been using by loosening the adhesive and pulling away from body.



6 With the infusion set removed from your body and the reservoir removed from the pump, select **Rewind**.



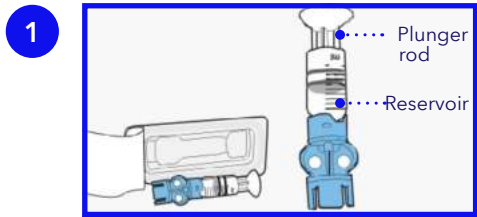
5 Remove the used reservoir from the pump.



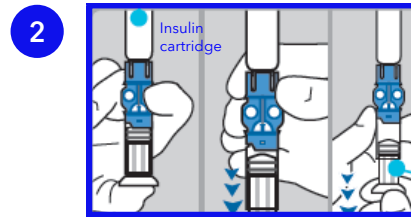
7 Continue with **"Filling the reservoir"** on the next page.

# MiniMed™ 780G System changing the Extended™ Infusion Set quick reference guide

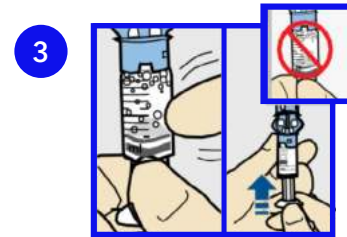
## Filling the Extended™ Reservoir using an insulin cartridge



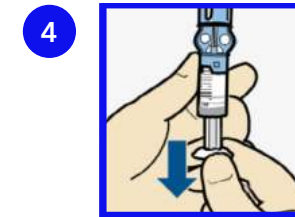
Remove from package. Make sure insulin vial is at room temperature to reduce the risk of air bubbles.



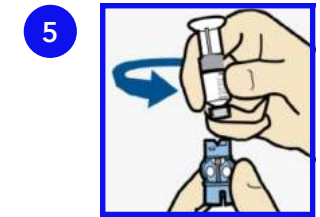
Hold the reservoir upright. Push plunger into the reservoir to expel any air. Turn plunger anti-clockwise slightly to loosen it. Firmly press insulin cartridge onto the blue transfer guard. Hold reservoir and cartridge at eye level and using a pencil, push down on the rubber stopper of the cartridge to fill the reservoir.



Tap the reservoir to move air bubbles to top of reservoir. Push plunger up to move air into cartridge.



Pull the plunger back down to correct the amount of insulin needed.



To avoid getting insulin on the top of the reservoir, turn vial over so it is upright. Hold transfer guard and turn reservoir counterclockwise and remove from transfer guard.

**WARNING** Do not use the reservoir or infusion set if any liquid gets on the top of the reservoir or inside the tubing connector. Liquid can temporarily block the vents. This may result in the delivery of too little or too much insulin, which can cause hyperglycaemia or hypoglycaemia. If any liquid gets on the top of the reservoir or inside the tubing connector, start over with a new reservoir and infusion set.

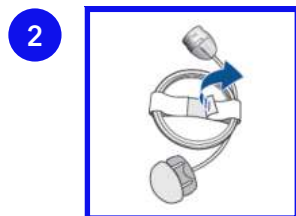
**Speak to your healthcare professional for guidance to treat low blood glucose as part of your insulin therapy.**

## Connect Extended™ Reservoir to infusion set tubing

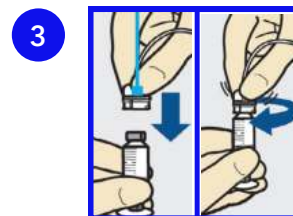
You will place the tubing connector onto the end of the filled reservoir.



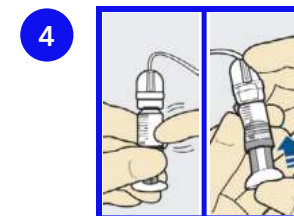
Remove infusion set from package.



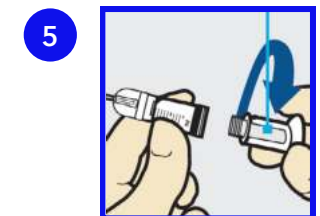
Remove the paper that holds the tubing together and unwind.



Gently push the tubing connector onto reservoir. Turn clockwise until locked. You will hear a click.



If you see air bubbles, tap reservoir to move them to top. Push plunger just a bit to move them into tubing.



Twist plunger counterclockwise to loosen and remove.

# MiniMed™ 780G System changing the Extended™ Infusion Set quick reference guide

## The backlight may have turned off

Press any button to turn the screen back on.

1



Press **O** to open the menu.

2



Select .

3

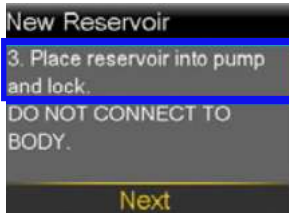


Select **Next**.

## Place reservoir into pump

Now place the filled reservoir into the reservoir compartment of the pump.

1



Place reservoir into pump.



2



Turn clockwise until you feel reservoir lock into place.

3



Select **Next**.



**NOTE:**  
Never fill the tubing while it is connected to your body.

## Load reservoir and fill tubing

Follow these steps to load the reservoir and fill the tubing

1



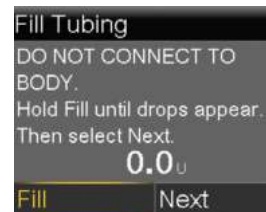
Select **Load** and keep holding **O**.

2



When you see this screen, select **Next**.

3



Remove the white cap from the site connector by squeezing the sides of the site connector then pull the white cap off. Select **Fill** and keep holding **O** until you see drops at the end of the tubing, then let go. After you see drops, press **Next**

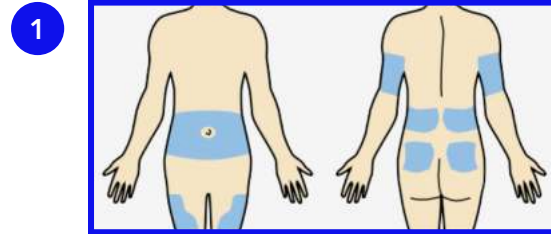


After you see drops, press **Next**.

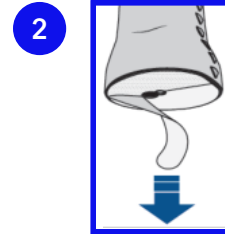
# MiniMed™ 780G System changing the Extended™ Infusion Set quick reference guide

## Insert infusion set

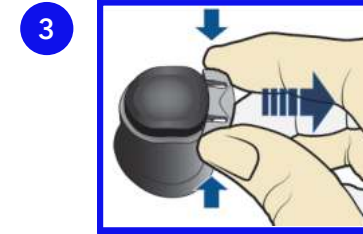
Next, follow these steps to insert the infusion set into your body.



1 Choose an insertion site from the shaded areas shown here. Wipe with alcohol or other antiseptic.



2 Remove the paper backing from the adhesive. Be careful not to touch the adhesive.

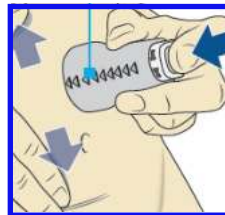
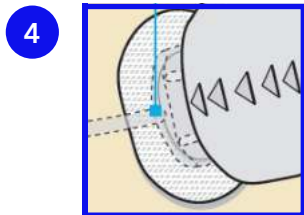


3 Remove the disconnect cover (the small plug below the button) by gently squeezing the sides of the disconnect cover then pulling it away from the insertion device.

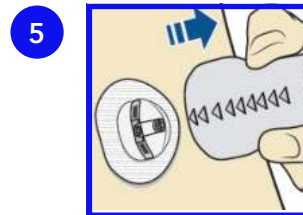
Keep the disconnect cover to plug into the cannula housing whenever you disconnect the tubing.

Tubing will connect here

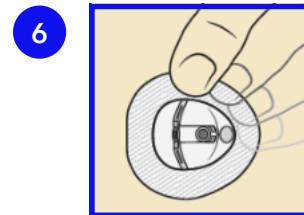
Arrows



4 The raised arrows on the insertion device indicate the direction the tubing will run when it is connected. Stretch the skin until smooth. Place the insertion device in the desired location on your skin.

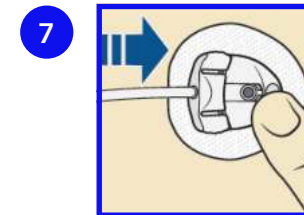


5 Gently and carefully remove the insertion device by pulling straight away from your body.



6 Press the adhesive onto the skin with your finger.

Replace the infusion set if the adhesive does not stick to the skin.



7 Gently hold the cannula housing steady with your finger. Then push the site connector straight into the cannula housing until you hear a click.

Then press the top button completely down to insert the infusion set.



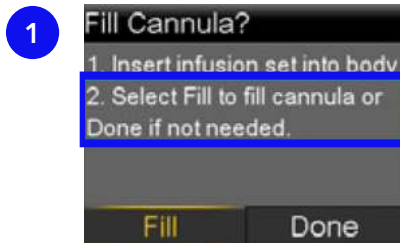
### NOTE:

Dispose of the insertion device in a sharps container.

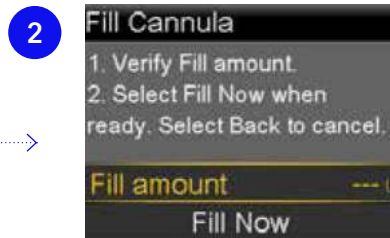
# MiniMed™ 780G System changing the Extended™ Infusion Set quick reference guide

## Fill cannula

You will now fill the cannula, the little tube under your skin, with insulin.



Select **Fill**.



Select Fill amount and enter:

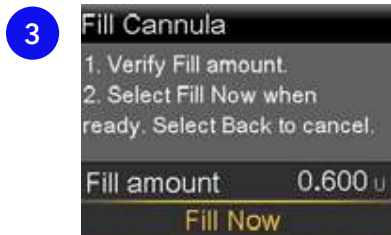
⌘ 0.600u of insulin.  
and press ⏎.



### NOTE:

Your pump will remember the **Fill amount** that you used last. Always verify that the Fill amount is correct.

- ⌘ If it is correct, press ▼ to **Fill Now** and press ⏎.
- ⌘ If it is incorrect, press ⏎. Change to correct amount and press ⏎. Select **Fill Now**.



Select **Fill Now**.



The Home screen displays the insulin as it fills the cannula.



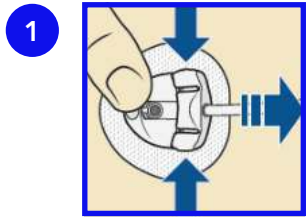
### NOTE:

Only select **Stop Filling** if you need to stop, for example, if you notice the **Total** amount is incorrect. This should rarely happen if you have verified the **Fill amount** on the previous screen.

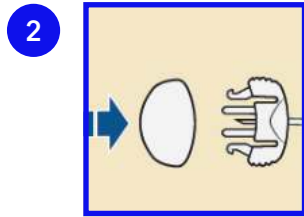
**Your infusion set change is now complete!**  
**Remember to check glucose levels 1-3hours**  
**after changing your infusion set**

# MiniMed™ 780G System changing the Extended™ Infusion Set quick reference guide

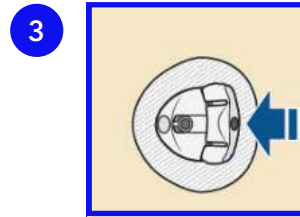
## Disconnecting the infusion set from your body



1 To disconnect, gently hold the cannula housing steady with your finger. Then squeeze the sides of the site connector and pull it out from the cannula housing.

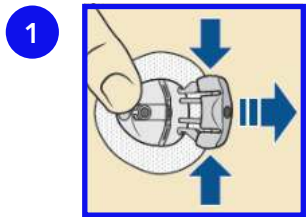


2 Put the white cap on the site connector.

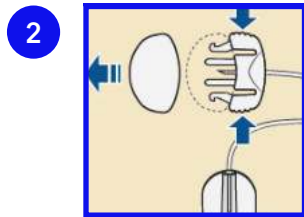


3 Put the disconnect cover on the cannula housing. Then push the cover into the cannula housing until you hear a click.

## Reconnecting the infusion set to your body

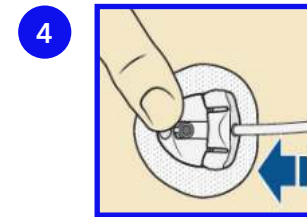


1 Use your finger to gently hold the cannula housing steady. Then squeeze the sides of the disconnect cover and pull it out from the cannula housing.



2 Remove the white cap from the site connector by squeezing the sides of the site connector then pulling the white cap off.

3 Check to make sure there is no air in the tubing. If there is air in the tubing, fill the tubing with insulin as instructed earlier in this document.



4 Use your finger to gently hold the cannula housing steady. Push the site connector into the cannula housing until you hear a click.