

MiniMed™ 780G System changing the Extended Reservoir only

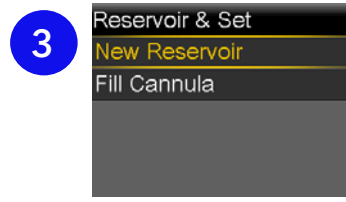
Preparing the pump to do a reservoir change



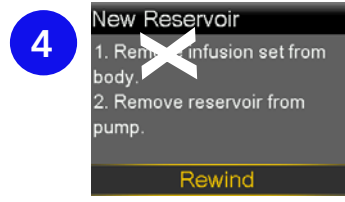
1 Wash your hands.
Press **O**



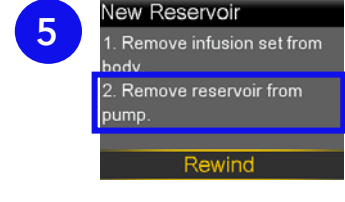
2 Select **Reservoir & Set**.



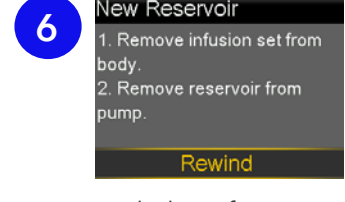
3 Select **New Reservoir**.



4 As you are only changing the reservoir, **DO NOT REMOVE THE INFUSION SET FROM THE BODY.** Disconnect the tubing from the infusion set.



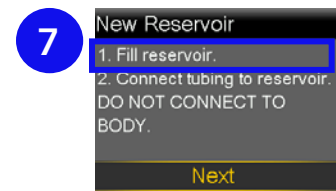
5 Remove the used reservoir from the pump, disconnect the tubing from the used reservoir, and place the tubing on a clean surface for use later. Discard the used reservoir.



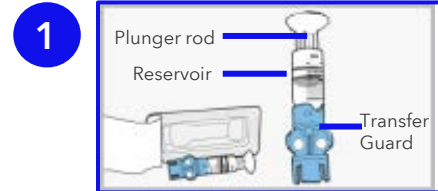
6 With the infusion set removed from your body and the reservoir removed from the pump, select **Rewind**



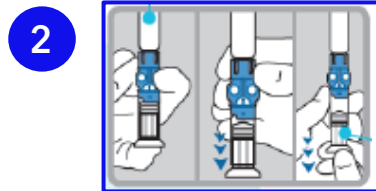
Filling the reservoir using an insulin cartridge



7 Continue with "Filling the reservoir" in the next section



1 Remove from package. Make sure insulin vial is at room temperature to reduce the risk of air bubbles.



2 Hold the reservoir upright. Push plunger into the reservoir to expel any air. Turn plunger anti-clockwise slightly to loosen it. Firmly press insulin cartridge onto the blue transfer guard. Hold reservoir and cartridge at eye level and using a pencil, push down on the rubber stopper of the cartridge to fill the reservoir.



3 Tap the reservoir to move air bubbles to top of reservoir. Push plunger up to move air into cartridge.



4 Pull plunger down to make sure you have the correct amount of insulin the reservoir



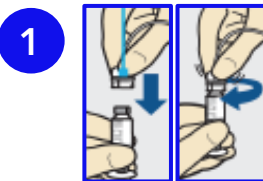
5 To avoid getting insulin on the top of the reservoir, turn the cartridge over so it is upright. Hold transfer guard and turn reservoir counter-clockwise to remove from the transfer guard



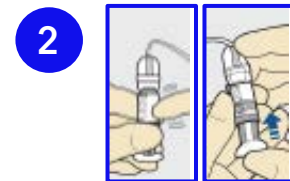
WARNING Do not use the reservoir or infusion set if any liquid gets on the top of the reservoir or inside the tubing connector. Liquid can temporarily block the vents. This may result in the delivery of too little or too much insulin, which can cause hyperglycaemia or hypoglycaemia. If any liquid gets on the top of the reservoir or inside the tubing connector, start over with a new reservoir and infusion set.

Connect reservoir to infusion set tubing

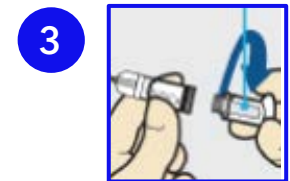
You will place the tubing connector onto the end of the filled reservoir.



1 Gently push the tubing connector onto reservoir. Turn clockwise until locked. You will hear a click.

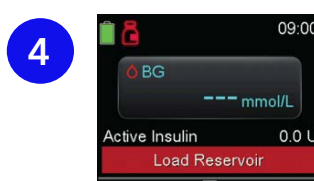


2 If you see air bubbles, tap reservoir to move them to top. Push plunger just a bit to move them into tubing.



3 Twist plunger counter-clockwise to loosen and remove.

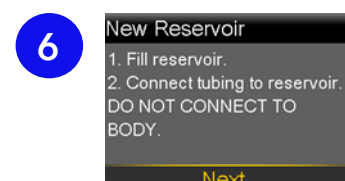
The backlight may have turned off. Press any button to turn the screen back on



4 Press **O** to open the menu. If the menu is locked, you will need to unlock the pump after pressing **O**



5 Select **Reservoir & Set**



6 Select **Next**

Speak to your healthcare professional for guidance to treat low blood glucose as part of your insulin therapy.

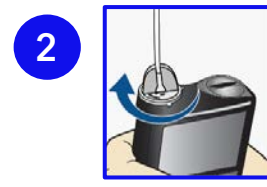
MiniMed™ 780G System changing the Extended Reservoir only

Load the reservoir into the pump and fill the tubing

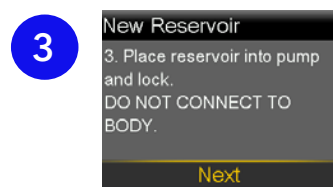
Next, you will place the filled reservoir into the reservoir compartment of the pump.



Place the reservoir into the pump



Turn the reservoir clockwise until you feel it lock into place



Select **Next**

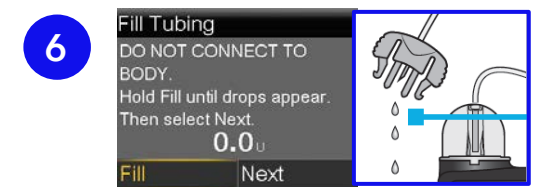
NOTE:
Never fill the tubing while it is connected to your body



Select **Load** and keep holding **O**



When you see this screen, select **Next**



Select **Fill** and keep holding **O** until you see drops at the end of the tubing. Let go and then select **Next**

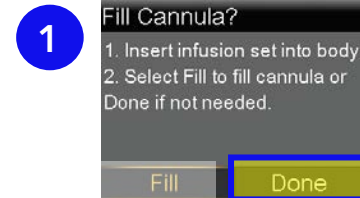
Reconnect the infusion set

Follow these steps to reconnect your infusion set tubing to the cannula on your body



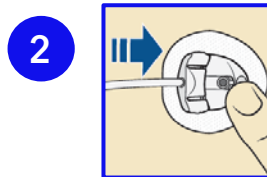
WARNING. DO NOT fill the cannula. Select Done.

When reconnecting the infusion set following a reservoir-only change, filling the cannula may result in the delivery of too much insulin, which could cause hypoglycaemia.



It is not necessary to fill the cannula because you did not change your infusion set.

Press **>** and select **Done**



Gently hold the cannula housing steady with your finger. Then push the site connector straight into the cannula housing until you hear a click

Your reservoir change is now complete

Remember to check your glucose levels 1-3hours after changing your reservoir

Speak to your healthcare professional for guidance to treat low blood glucose as part of your insulin therapy.

Medtronic Australasia Pty Ltd
2 Alma Road
Macquarie Park, NSW 2113,
Australia
Tel: +61 2 9857 9000
Fax: +61 2 9889 5167
Toll Free: 1800 777 808

E-Mail: australia.diabetes@medtronic.com
Facebook: www.facebook.com/MedtronicDiabetesAUS
YouTube: Medtronic Diabetes ANZ

<https://www.medtronic-diabetes.com.au/>

Always read the instructions for use.

For detailed information regarding the instructions for use, indications, contraindications, warnings, precautions, and potential adverse events, please consult the device manual. For further information, contact your local Medtronic representative.

© 2024 Medtronic Australasia Pty Ltd. All Rights Reserved. Please note: In contacting the Diabetes Toll Free, your personal and health information may be disclosed to an operator located outside Australia.

Medtronic